

FLOOR PLANS

4 - BEDROOM



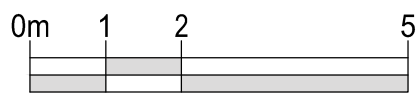

SOUTH BEACH
RESIDENCES

TYPE 4B1

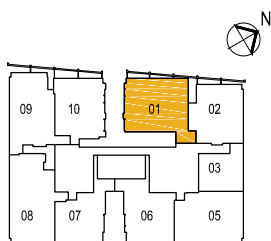
4-BEDROOM

(224 sq m / 2,411 sq ft)

#23-01



NOT TO SCALE



FOR LEVEL 23

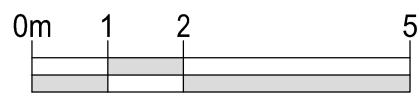
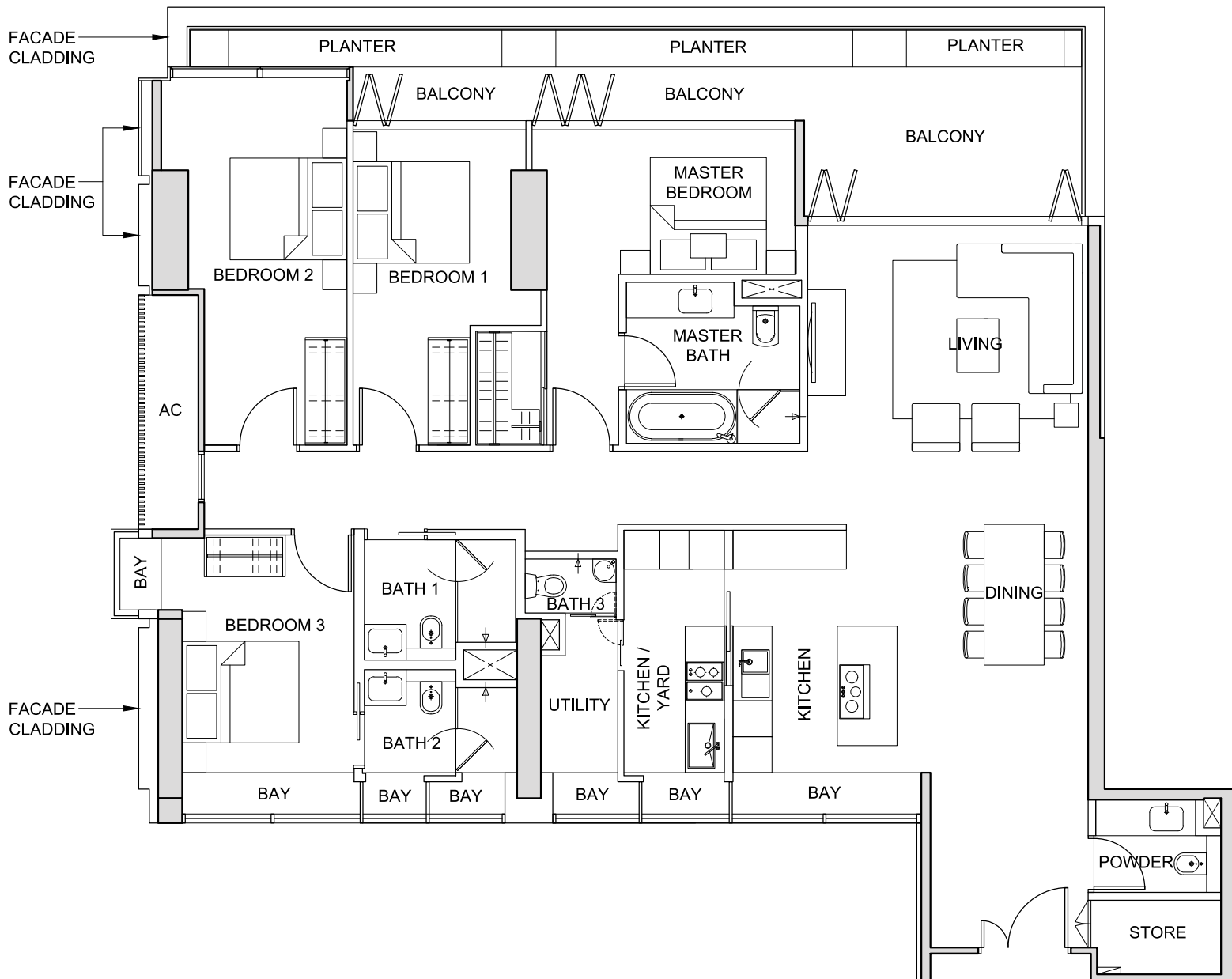
The above plans and illustrations are subject to change as may be required or approved by the relevant authorities. All measurements are estimates only and are subject to final survey.

TYPE 4B2

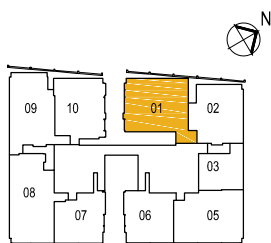
4-BEDROOM

(224 sq m / 2,411 sq ft)

#24-01



NOT TO SCALE



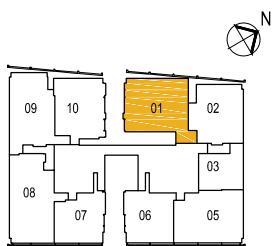
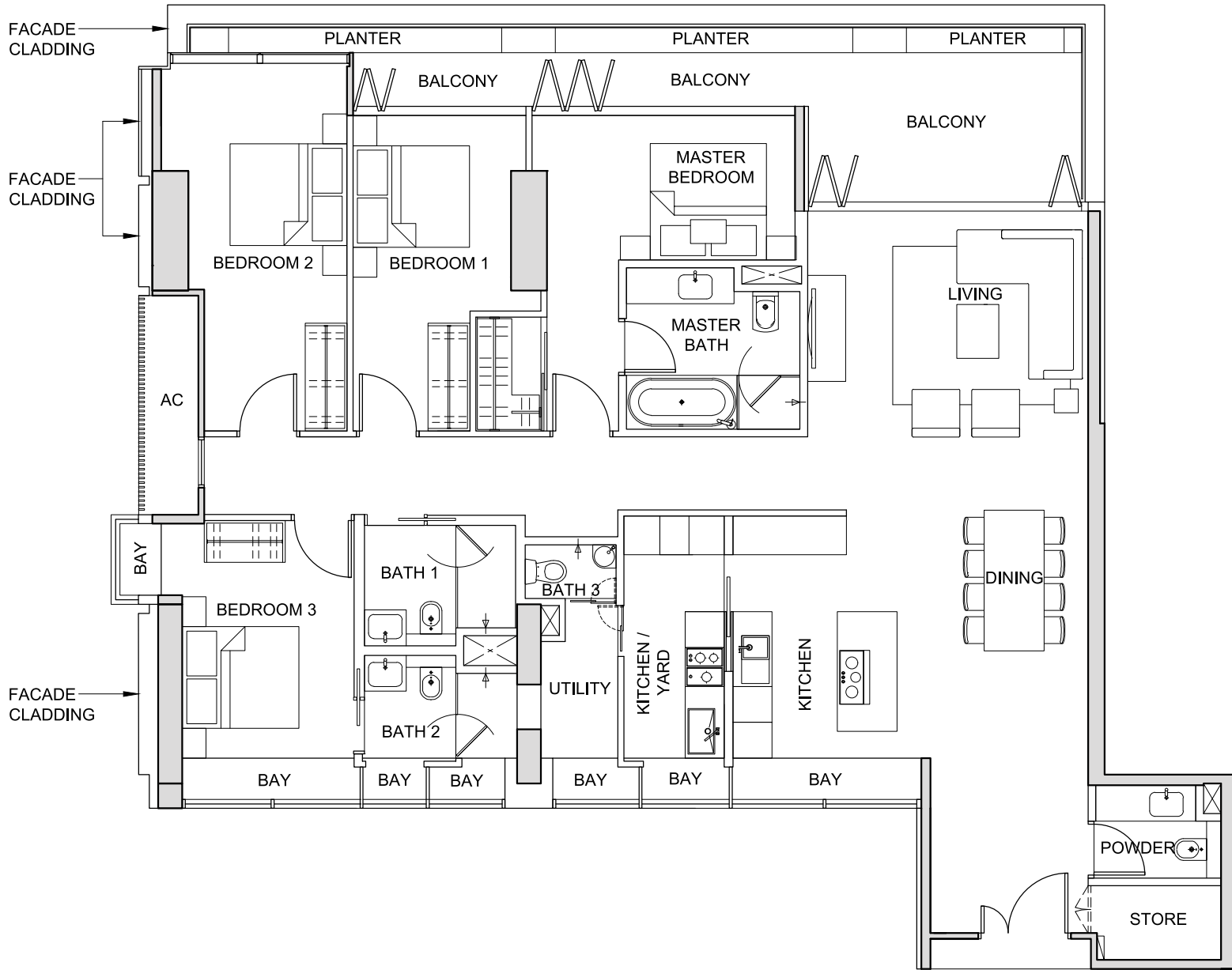
FOR LEVEL 24

The above plans and illustrations are subject to change as may be required or approved by the relevant authorities. All measurements are estimates only and are subject to final survey.

TYPE 4B3

4-BEDROOM
(220 sq m / 2,368 sq ft)

#25-01



FOR LEVEL 25

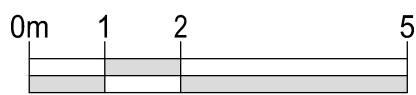
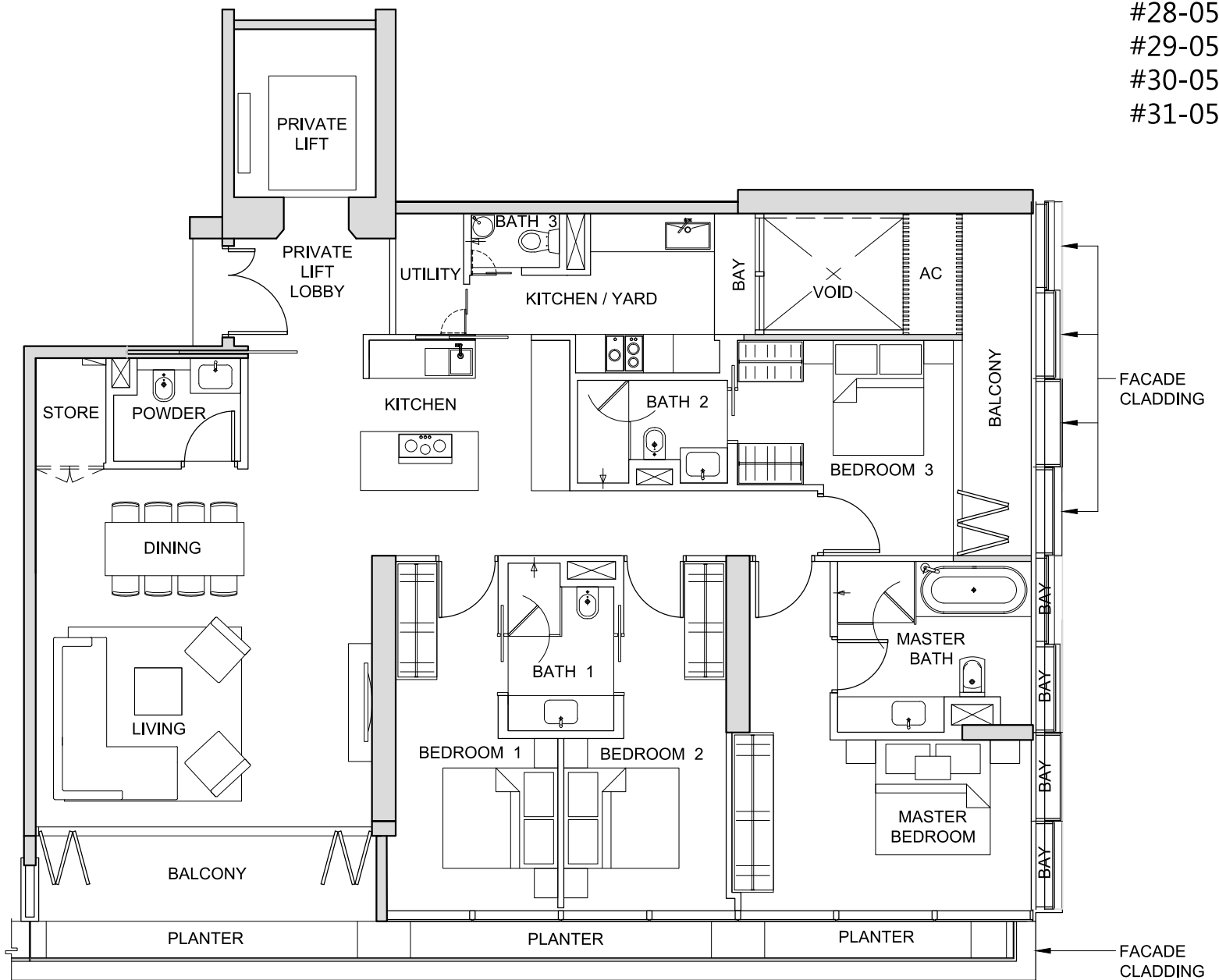
The above plans and illustrations are subject to change as may be required or approved by the relevant authorities. All measurements are estimates only and are subject to final survey.

TYPE 4C1

4-BEDROOM

(210 sq m / 2,260 sq ft)

- #23-05
- #24-05
- #25-05
- #26-05
- #27-05
- #28-05
- #29-05
- #30-05
- #31-05



NOT TO SCALE



FOR LEVEL 23



FOR LEVELS 24-31

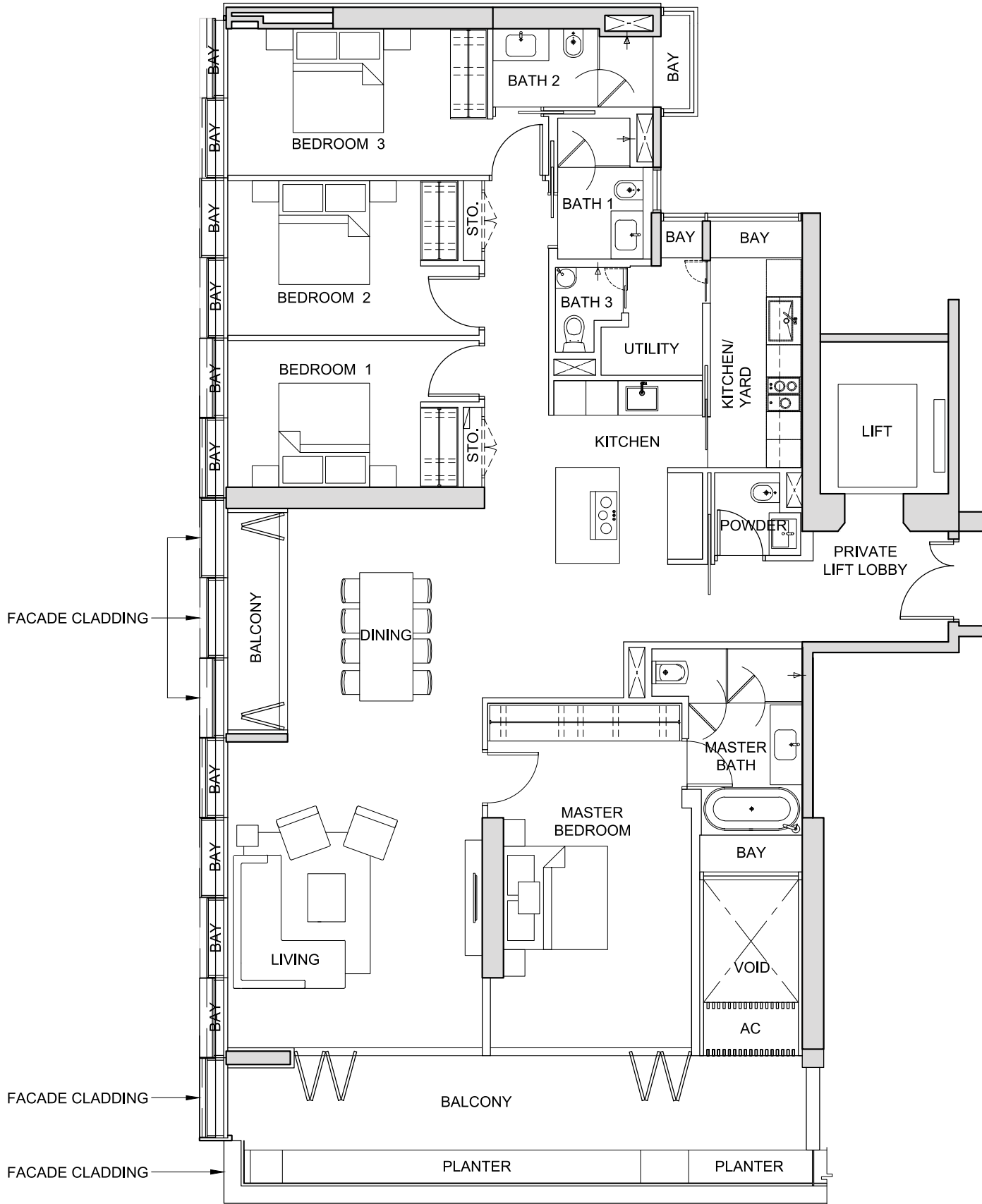
The above plans and illustrations are subject to change as may be required or approved by the relevant authorities. All measurements are estimates only and are subject to final survey.

TYPE 4D1

4-BEDROOM

(243 sq m / 2,616 sq ft)

- #23-08
- #26-08
- #27-08
- #28-08
- #29-08
- #30-08
- #31-08
- #33-08
- #34-08
- #35-08
- #36-08
- #37-08
- #38-08
- #39-08
- #40-08



FOR LEVEL 23



FOR LEVELS 26-31



FOR LEVELS 33-40



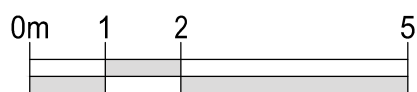
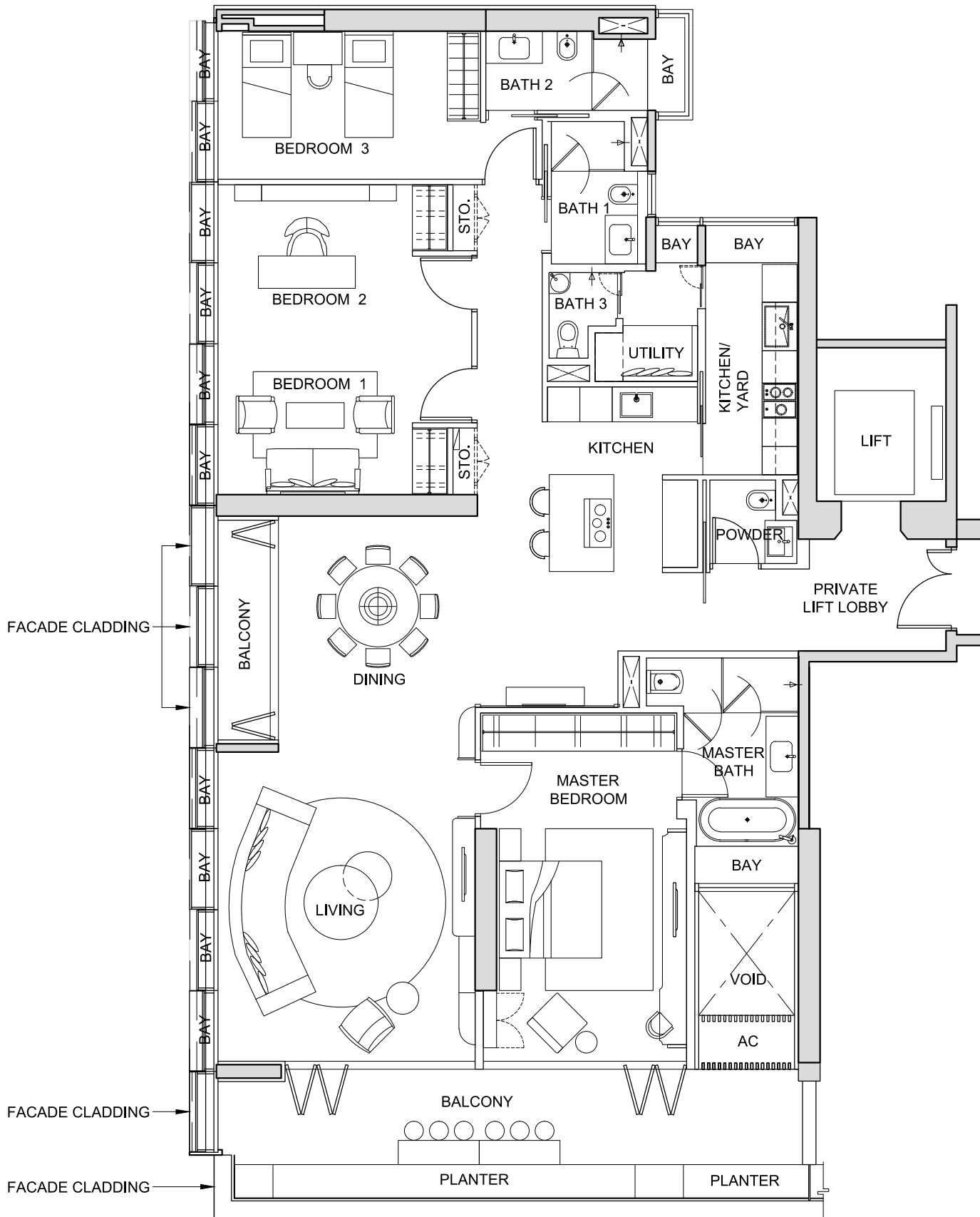
NOT TO SCALE

TYPE 4D1-A

4-BEDROOM

(243 sq m / 2,616 sq ft)

#24-08



NOT TO SCALE



FOR LEVEL 24

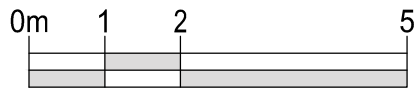
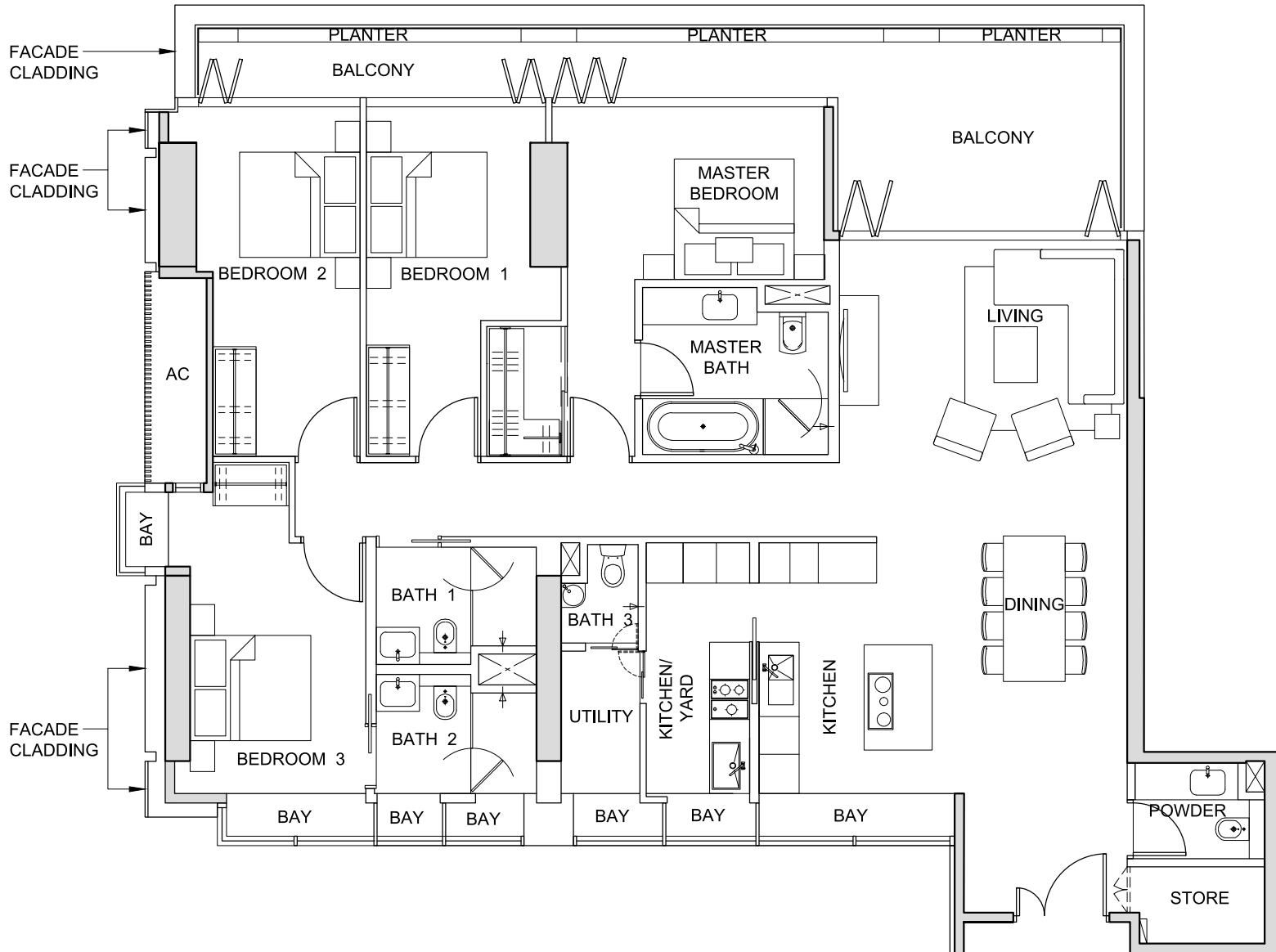
The above plans and illustrations are subject to change as may be required or approved by the relevant authorities. All measurements are estimates only and are subject to final survey.

TYPE 4F1

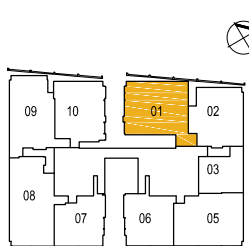
4-BEDROOM

(219 sq m / 2,357 sq ft)

#26-01



NOT TO SCALE



FOR LEVEL 26

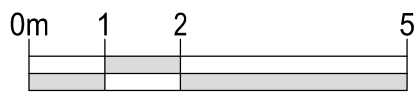
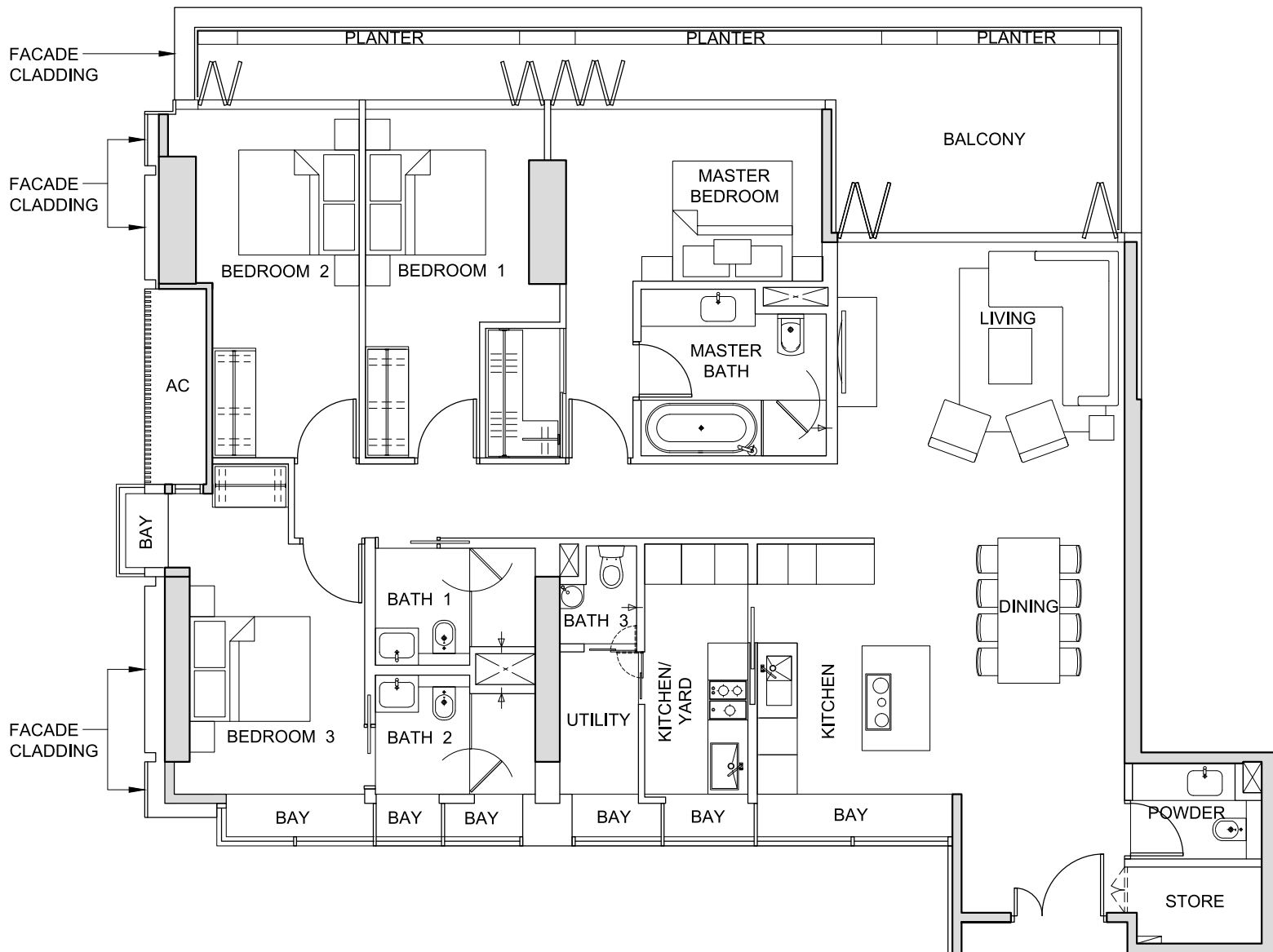
The above plans and illustrations are subject to change as may be required or approved by the relevant authorities. All measurements are estimates only and are subject to final survey.

TYPE 4F2

4-BEDROOM

(219 sq m / 2,357 sq ft)

#27-01



NOT TO SCALE



FOR LEVEL 27

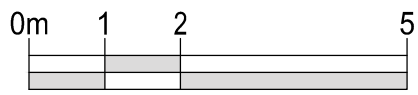
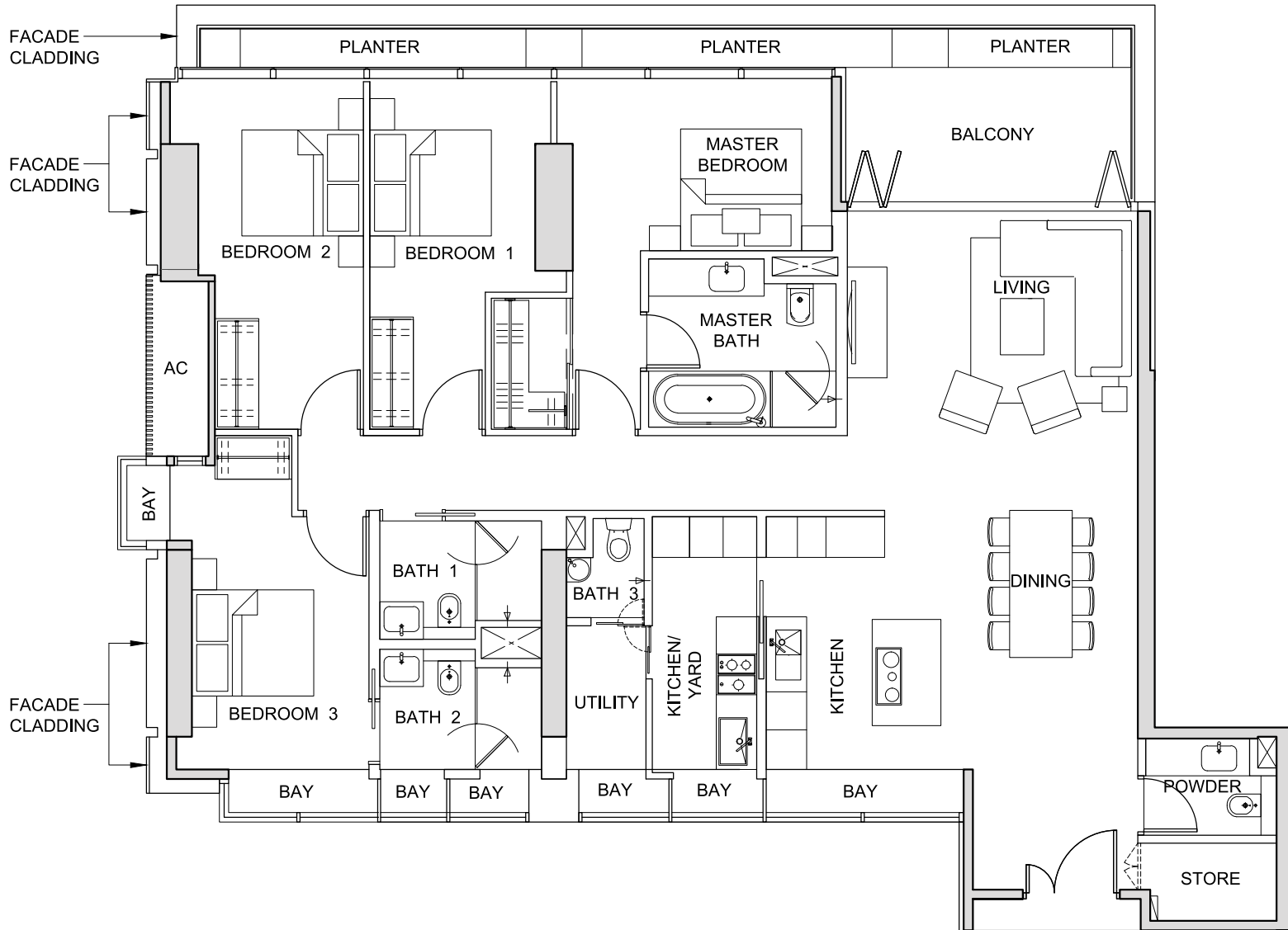
The above plans and illustrations are subject to change as may be required or approved by the relevant authorities. All measurements are estimates only and are subject to final survey.

TYPE 4F3

4-BEDROOM

(211 sq m / 2,271 sq ft)

#28-01



NOT TO SCALE



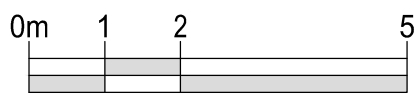
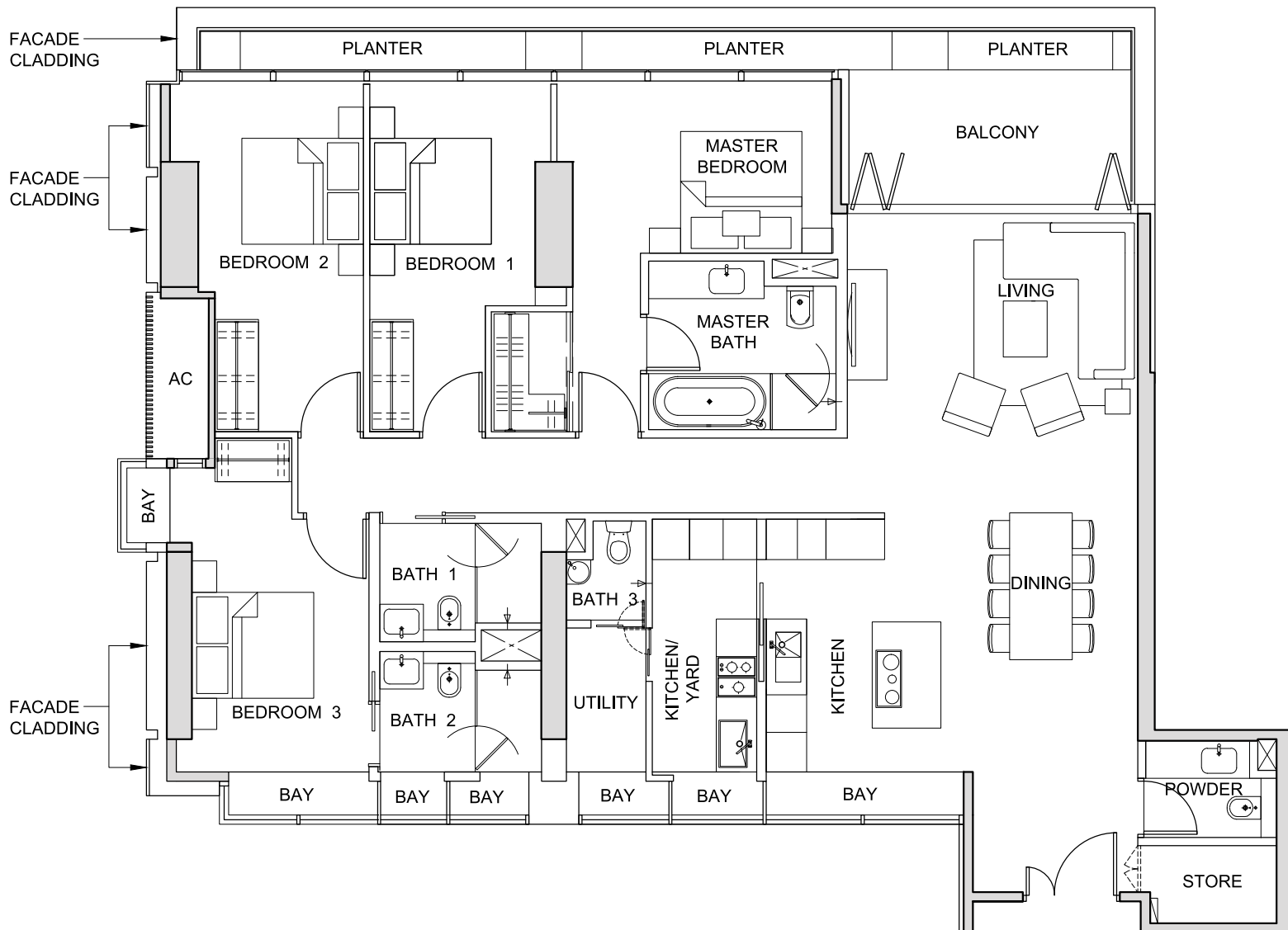
FOR LEVEL 28

The above plans and illustrations are subject to change as may be required or approved by the relevant authorities. All measurements are estimates only and are subject to final survey.

TYPE 4F4

4-BEDROOM
(211 sq m / 2,271 sq ft)

#29-01



NOT TO SCALE



FOR LEVEL 29

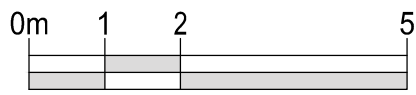
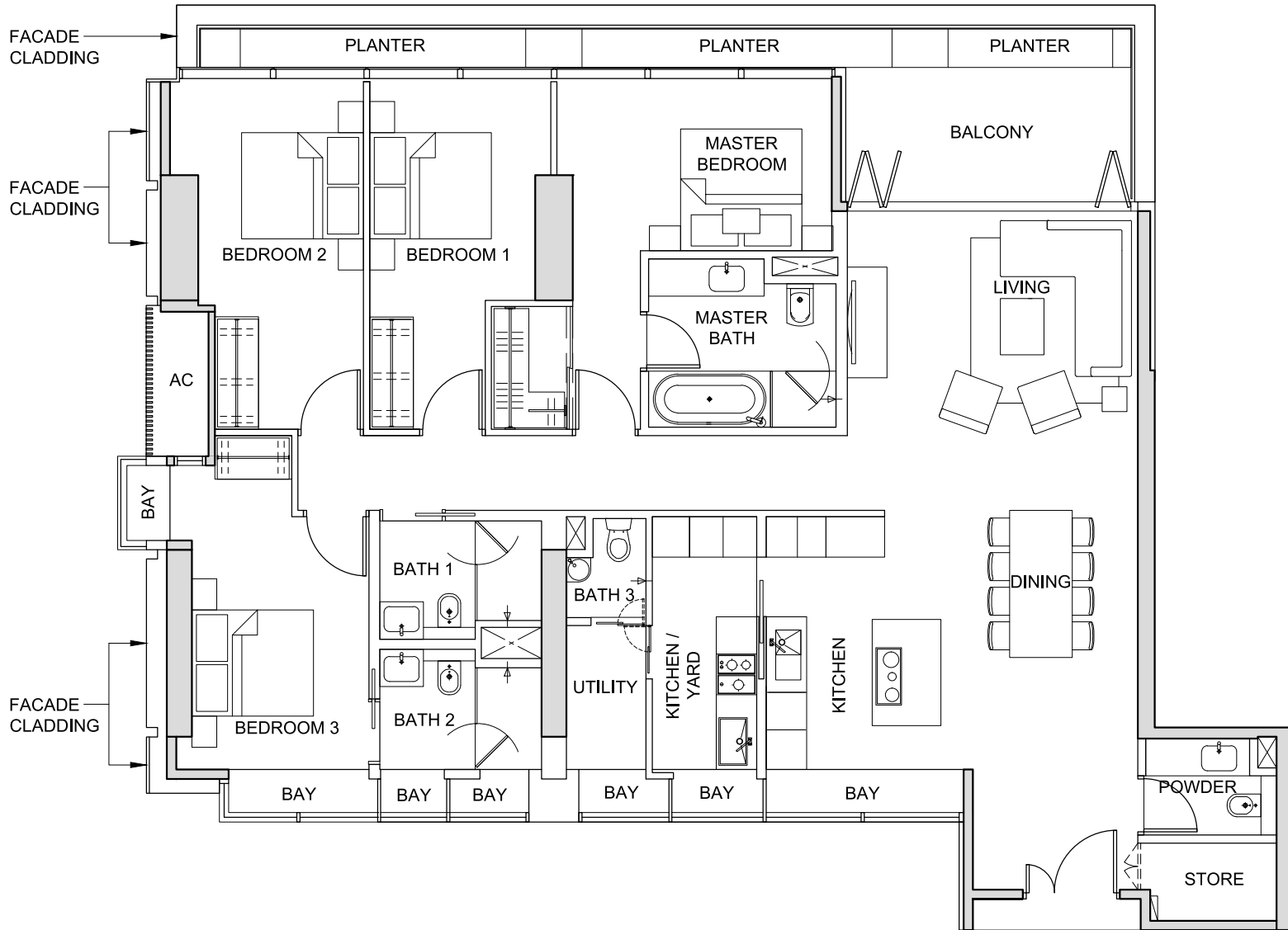
The above plans and illustrations are subject to change as may be required or approved by the relevant authorities. All measurements are estimates only and are subject to final survey.

TYPE 4F5

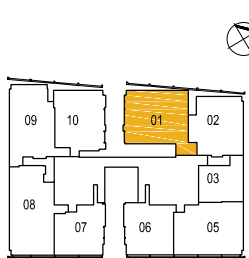
4-BEDROOM

(211 sq m / 2,271 sq ft)

#30-01



NOT TO SCALE



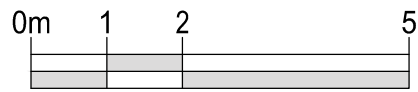
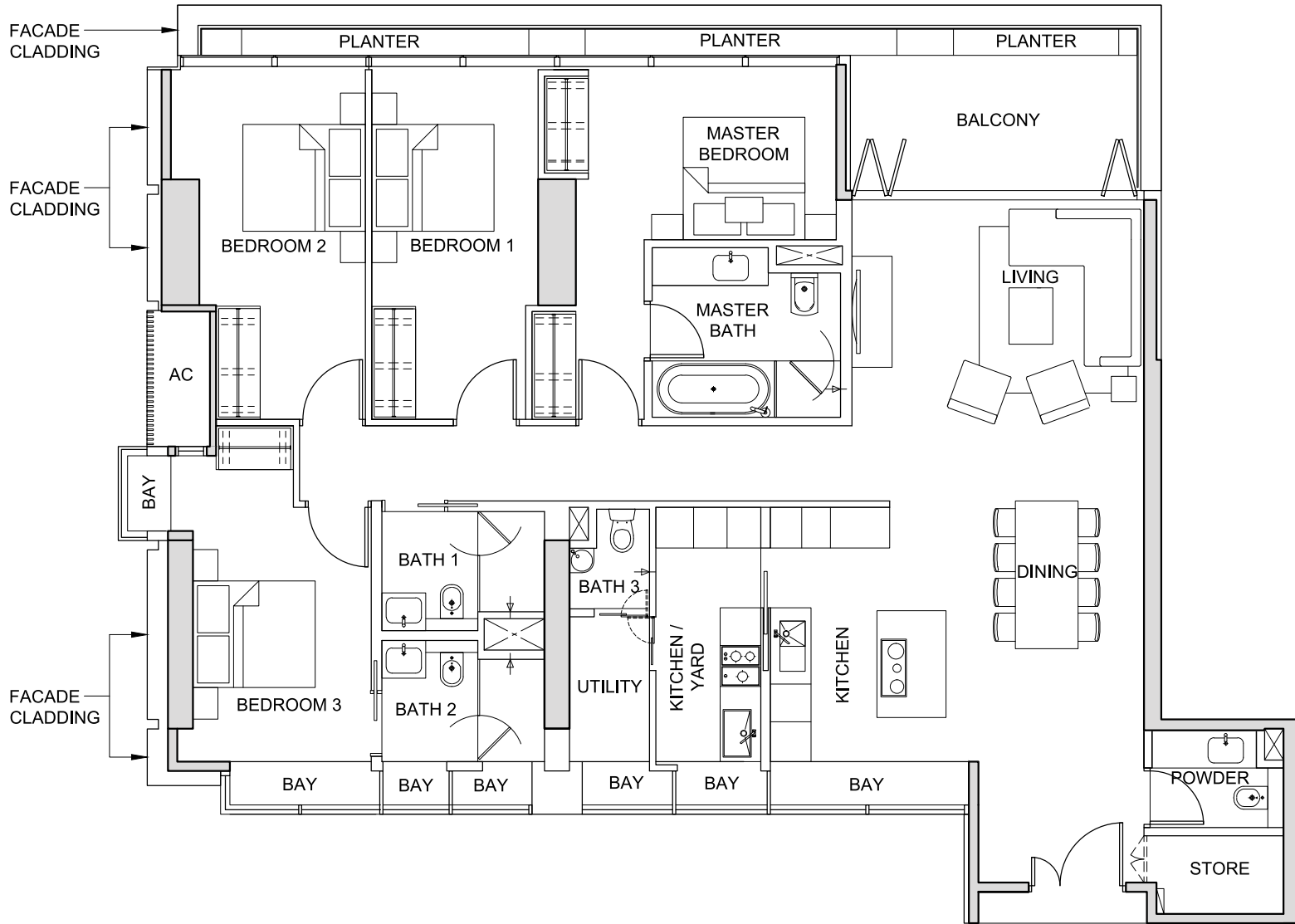
FOR LEVEL 30

The above plans and illustrations are subject to change as may be required or approved by the relevant authorities. All measurements are estimates only and are subject to final survey.

TYPE 4F6

4-BEDROOM
(208 sq m / 2,239 sq ft)

#31-01



NOT TO SCALE



The above plans and illustrations are subject to change as may be required or approved by the relevant authorities. All measurements are estimates only and are subject to final survey.